

A Family Album of Insects observed over the Summer of 2020

As an accompaniment to the Map of Insects in our Yard over a Stay-at-Home Summer: "Small World" (visit www.emmaecho.com/smallworld to view and download your own copy)

This album features additional photographs, documentation, and observations taken by the author,
Emma Eckert.

Also included are sketches of plants reproduced from the field journals of Jane Kramer.



This work is licensed under the Creative Commons Attribution-NonCommercial 4.0 International License.

To view a copy of this license, visit <http://creativecommons.org/licenses/by-nc/4.0/>
or send a letter to Creative Commons, PO Box 18666, Mountain View, CA 94042,
USA

Ants - family Formicidae



Ants on
bottlecap
walkway



Ants in Trumpet Vine flower

Sugar ants
on Gummy Bear
in kitchen sink



*Butterflies - Order Lepidoptera;
Families Pieridae, Nymphalidae, Papilionidae,
Lycaenidae*

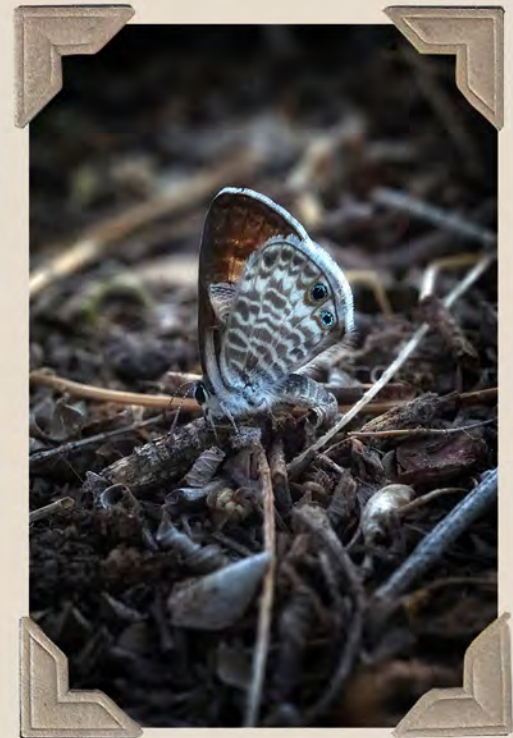
*Cabbage White
on Iris*



Painted Lady on Apple blossom



*Swallowtail on Pink Silk Tree
bloom*



Moths - Order Lepidoptera;
Families Noctuidae, Sphingidae



Noctuidae species on
bark of Pink Silk Tree



Sphingidae
species on front
window



Moth on mullein
(*Verbascum thapsus*)



Wasp Families

Vespididae and Sphecidae, Ichneumonidae



Paper Wasp on Prickly Pear



Sphecidae (thread-waisted) wasp on Narrowleaf Milkweed



Paper Wasps building nest



Hollyhock and paper wasp



Ichneumonidae wasp on
Prickly Lettuce



Paper wasp on cattail

Plants pictured, with uses:

Prickly Pear (*Opuntia* sp.)
- edible fruit, leaf segments

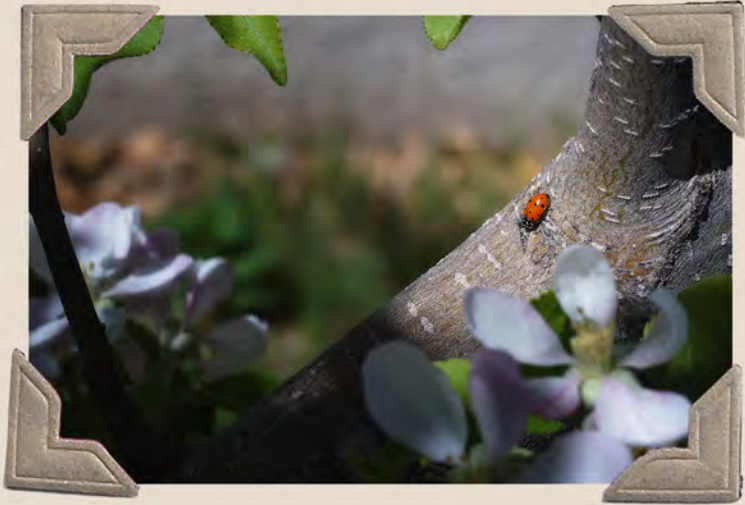
Cattail (*Typha* sp.)
- edible tubers; leaves used for weaving mats
and cushions

Prickly Lettuce/Compass plant (*Lactuca
serricola*)
- edible leaves, roots; many medicinal uses

Hollyhock; Las Varas de San Jose (*Alcea* sp.)
- all parts of plant are edible; medicinal uses

Narrowleaf Milkweed (*Asclepias fascicularis*)
- fibers used for yarn and textiles

*Beetles - Order Coleoptera;
Families Curculionidae, Coccinellidae,
Chrysomelidae, Cantharidae...*



Ladybugs, or Ladybird beetles
— Family Coccinellidae — were
dedicated to the Virgin Mary
in the Middle Ages and called
“beetle of Our Lady.”



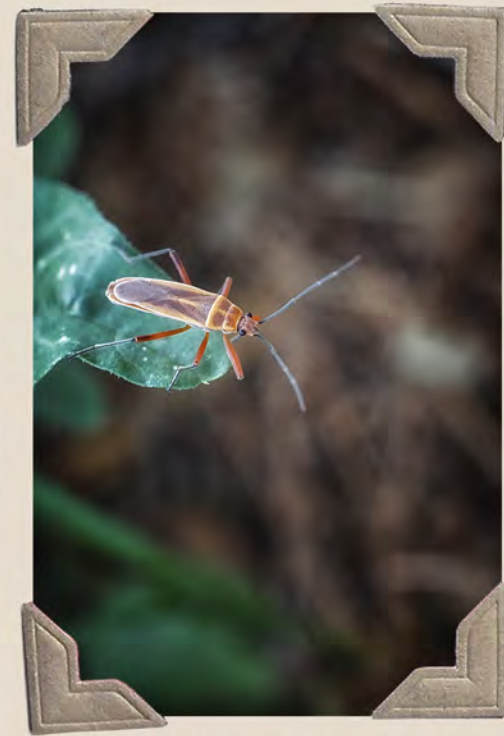
“True” weevils (or “snout beetles”) belong to
one of the largest animal families, Curculionidae,
which has over 80,000 known species worldwide.



Tiny beetle on wall — there are so many species of beetles, it is sometimes hard to identify them.



Beetle on Amaranth



Soldier beetle
(Cantharidae)



— a possibly apocryphal, but appropriate nevertheless, quote from J. B. S. Haldane, British geneticist and evolutionary biologist



Family Chrysomelidae — “leaf-eating” beetles. Beetles in this family often are small and have intricate patterns.

Dragonflies - in the family Libellulidae



This Flame Skimmer and its offspring and ancestors have visited our pond for several years



Shed exoskeleton



Nymph in jar for temporary observation

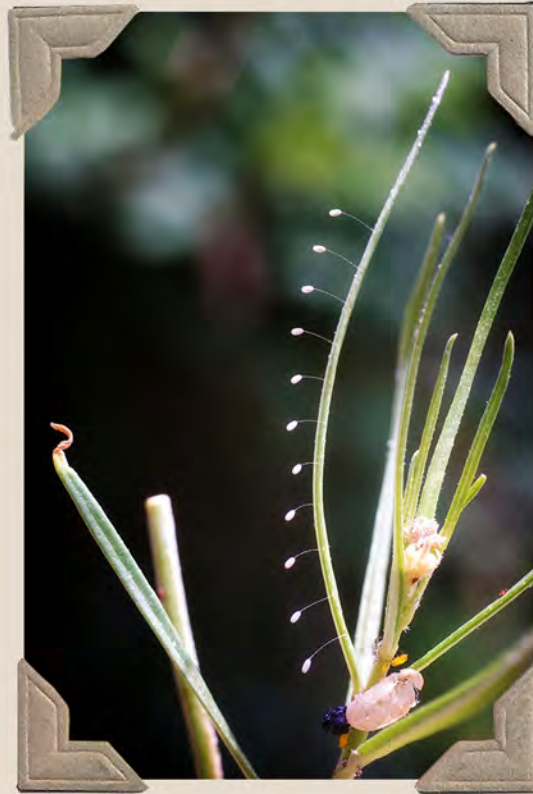


Net-winged insects - Order Neuroptera

Families Chrysopidae and Myrmeleontoidea



The antlion (family Myrmeleontoidea) is often confused for a damselfly, though they are nocturnal and usually brown in color. The larvae create pits in the ground and bury themselves at the bottom of the funnel and wait for ants or other small creatures to come along to eat for lunch.



Lacewings lay their eggs on delicate stalks. This method is thought to keep the voracious larvae — called "aphid wolves" — from cannibalizing each other upon hatching.

Bees - families Apidae, Halictidae, Megachilidae



"Teddy Bear Bee"



Carpenter bee - shiny abdomen



Honeybees and bumblebees make up only around 2 percent of all bee species!



Red Clover



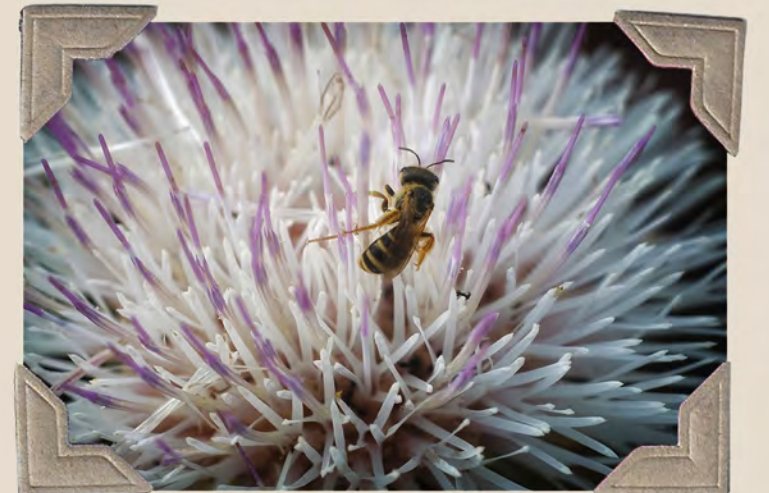
Honeybee on tomato



Sweat bee in hollyhock



Bumblebee on clover

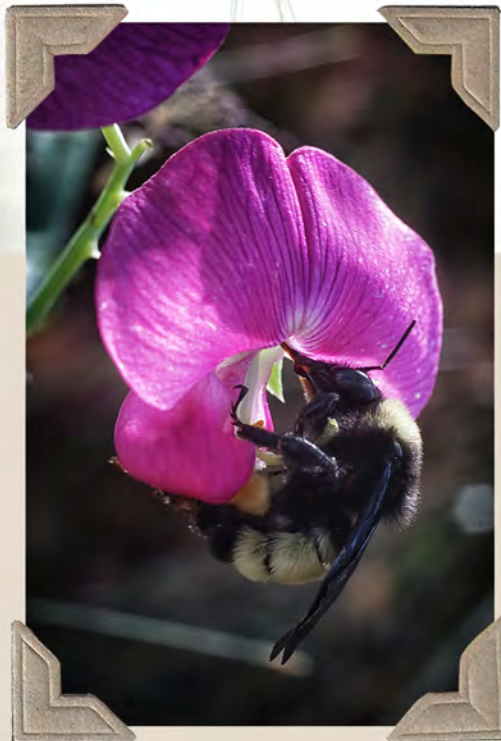




Honeybee with trumpet vine flower



Native bee on
Mexican Hat



Bumblebee with
Perennial
Sweet Pea
(*Lathyrus latifolius*)

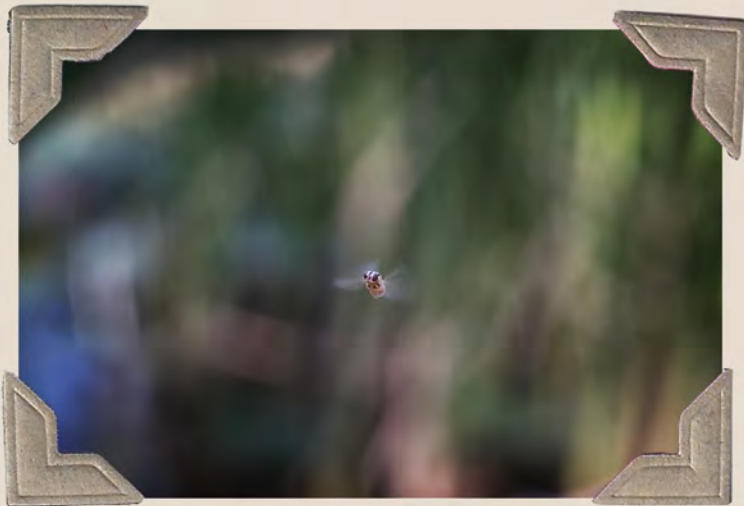


Honeybee
in Pink Silk
Tree
flower

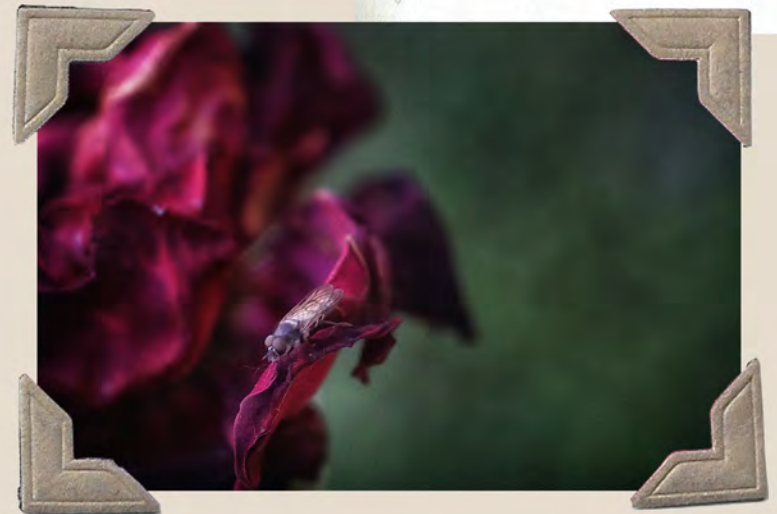
Flies - Families Muscidae, Calliphoridae, Syrphidae



The Rose bushes seem to attract flies... especially the dead flowers

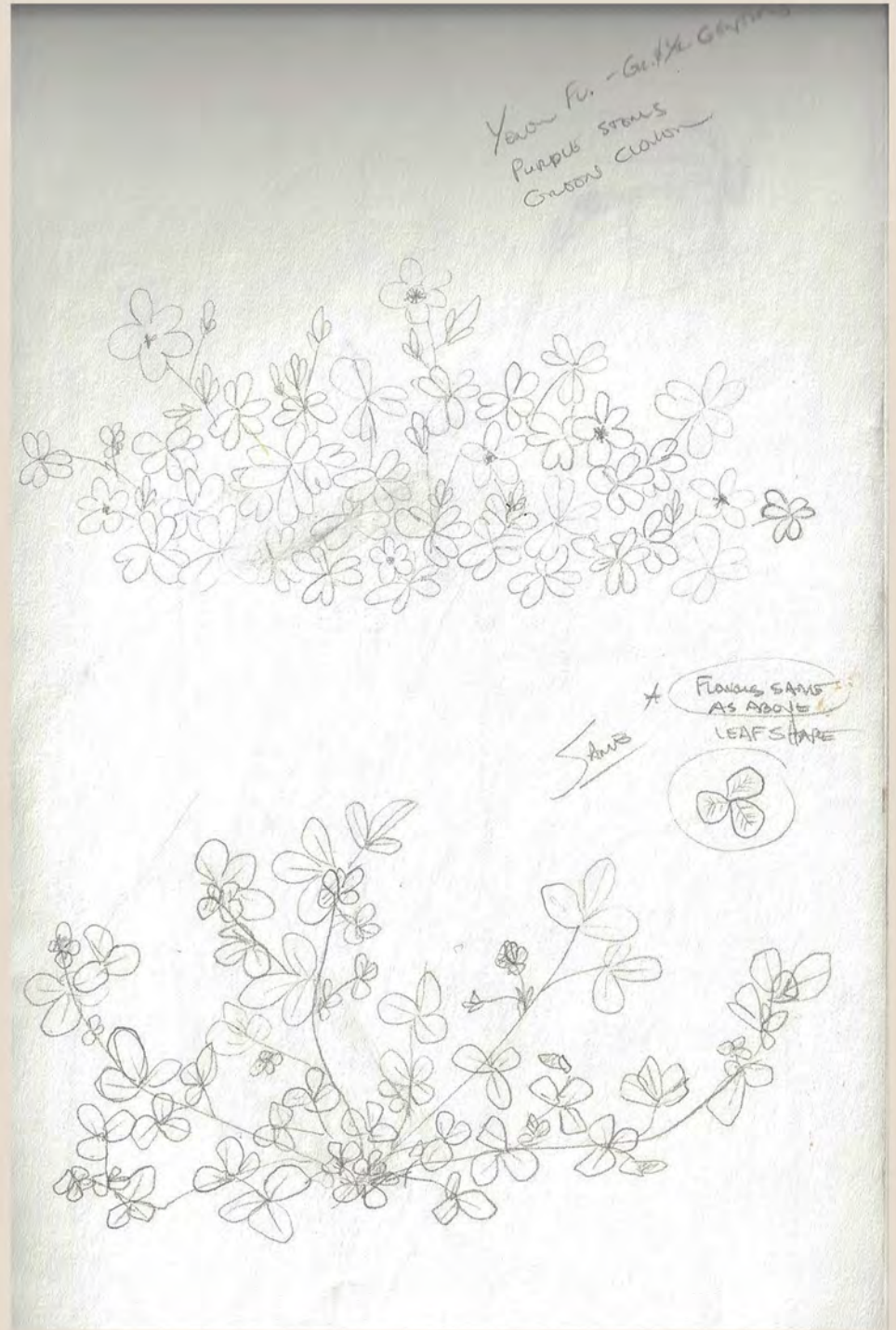
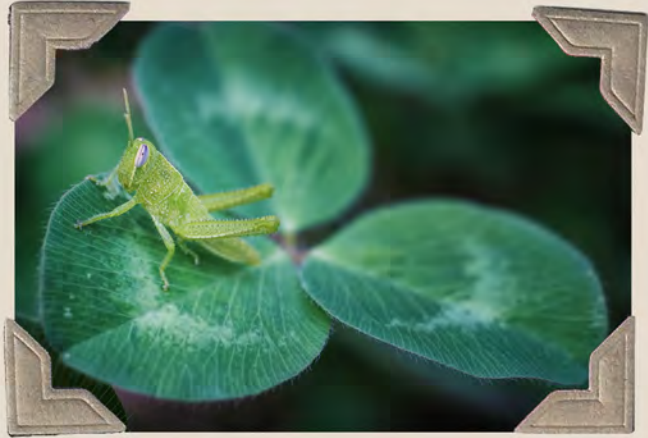


Tiny Hoverfly mid-air near pond



Grasshoppers

- family Acrididae





There are two families of grasshoppers found in New Mexico, but only one is represented here.



Mantises - family Mantidae



The summer of 2020 was certainly the season of the Mantis. We found many, many nymphs and adults throughout the summer months, and as a surprise, an ootheca (mantis egg case) came indoors with one of our houseplants when we brought it in for the winter. On the winter solstice, tiny mantises began hatching out. We had a mantis sanctuary in our kitchen window for many weeks, though none of the babies lived to adulthood.

The Trumpet Vine is a popular hangout for the mantises. See the gravid female to the right.



Mantis eating grasshopper



Mantis nymph on mullein



"True bugs" - Order Hemiptera Families Reduviidae and Pentatomidae



A green shield bug
on tomato plant.
Family Pentatomidae

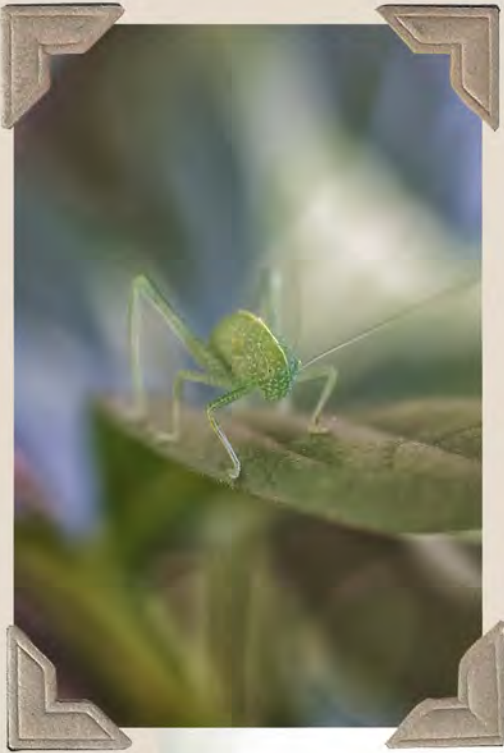
Sometimes called "stink bugs,"
though I reserve that name
for beetles in the *Eleodes*
genus - black beetles that
crawl around the desert
and stand on their heads
(also known as "clown
beetles" because of this
acrobatic act) and emit a
stinky odor when feeling
threatened.



Assassin bug - family Reduviidae
Predatory insects - hunt for
prey

Tettigoniidae family

One Katydid, all alone on a family page by itself. There may be more dwelling in our yard, but as they are primarily nocturnal and masters of camouflage, this is the only one we saw. Like an insect made of green glass, it sat upon the Peony, its long antennae feeling about. (They are supposed to have quite the mating song.)



Purple/Red stem / Bottom leaves
Green leaves
Yellow buds / flowers



Family Album references

University of Minnesota 2021, Bee Diversity / Bee Lab, Regents of the University of Minnesota, accessed 30 March 2021, <<https://www.beelab.umn.edu/bees/bee-diversity>>.

Curculionidae in GBIF Secretariat (2019). GBIF Backbone Taxonomy. Checklist dataset <https://doi.org/10.15468/39ome1> accessed via GBIF.org on 2021-03-31.

Merrim-Webster 2021, Word History A 'Ladybug's' Spots The story behind the ladybug's name comes down to Christian symbolism, accessed 31 March 2021, <<https://www.merriam-webster.com/words-at-play/word-history-ladybug-christianity>>.

What's That Bug 2012, Probably Lacewing Eggs, accessed 31 March 2021, <<https://www.whatsthatbug.com/2012/04/02/probably-lacewing-eggs/>>.



Disclaimer

The information contained within this album is believed to be as accurate as possible, however, the author makes no claims, promises, or guarantees about the accuracy of the contents, and expressly disclaims liability for errors and omissions in the contents. If you have any suggestions, corrections, or recommendations, please send them to emma.echo.photo@gmail.com.

The author takes no responsibility for any harm that may come from your interactions with insects or plants.

Please research your plants carefully and make sure of the identification before eating or using medicinally.



